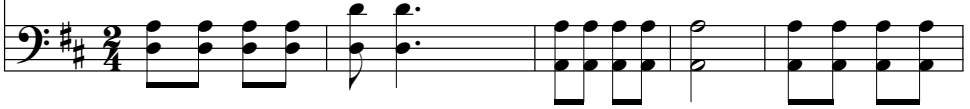


## K'e sa' ajl li k'iila usilal

Rik'in sahilal ♩ = 80-96



1. Naq sa' kaq-sut - iq' wan-kat chi\_a - pu - sin - b'il, Naq xluk - ta aa -  
 2. Ma ch'a'-aj laa wiiq ut ra laa ch'ool naq wan? Ut ma aal li  
 3. Maa-k'ox-la a - ni wan xb'i-ho - mal a - rin, Lix b'ihoh-mal li  
 4. K'e ree - tal sa' xyi xnin-qal laa ch'a'aj - ki - lal, Sa' xb'een chix-ju -



ch'ool ut na - num - ta xra - hil, K'e sa' ajl li u - si - lal k'ee -  
 krus li ii - qan - b'il aa - b'aan? K'e sa' ajl li k'ii - la u - si -  
 Kris - to maa - wa' re tu - min. K'e sa' ajl k'a' - ru in - k'a' na -  
 nil li Dios wan xwan - ki - lal. K'e sa' ajl li xk'ee aa - we, ut



b'il aa - we, Ut taa-sachq aa - ch'ool— k'a' - jo' li Dios nax - k'e!  
 lal xa - k'ul, Ut taa - waj b'i - chank xb'aan xsa - hil aa - ch'ool.  
 ru xloq' - b'al: Laa na' - aj wan sa' cho - xa ut laa kol - b'al.  
 ju - ne - lik Li an - jel te' - wanq cha-wu sa' laa b'ee - nik.



K'e sa' ajl li k'ii-la u - si - lal Xk'ee aa -  
 K'e sa' ajl li u - si - lal: Li k'ee-b'il aa - we. K'e sa' ajl li



we li Qaa-wa' Dios chi yaal. K'e sa' ajl,  
 u - si - lal Li Qaa-wa' nax - k'e. K'e sa' ajl li u - si - lal,

*rit.* ut ree-tal taa - k'e — *a tempo* Maa-k'a'-jo' li u - si - lal xb'aa - nu aa - we.

*Raatinul:* Johnson Oatman, Jr., 1856–1922  
*Xyaab'al:* Edwin O. Excell, 1851–1921

Tzol'leb' ut Sumwank 78:17–19  
 Alma 34:38

## Chiqanima li Qaawa' Dios

154

*Rik'in nimajwalil* ♩ = 58–72  
 Chi - qa - ni - ma li Qaa-wa' Dios, Aj k'e-hol re tz'a - qal li us;

Li Yu - wa' - b'ej, li K'a - jol - b'ej, Jo' - wi' li San - til Mu - si - q'ej.

*Raatinul:* Thomas Ken, 1637–1711  
*Xyaab'al:* Louis Bourgeois, ca. 1510–1561. Tawb'il sa' *Genfer Psalter*, chirix 1500.

Salmos 148:1–2, 10–14  
 Efesios 1:3